

## Glossary

### camouflage

to blend in with a background.

### colour wheel

a picture chart that compares colours.

### complementary colours

colours opposite to one another on the colour wheel.

### culture

a particular group of people's beliefs, skills and ways of living.

### exhibition

a display of objects (often this display is of art).

### pigments

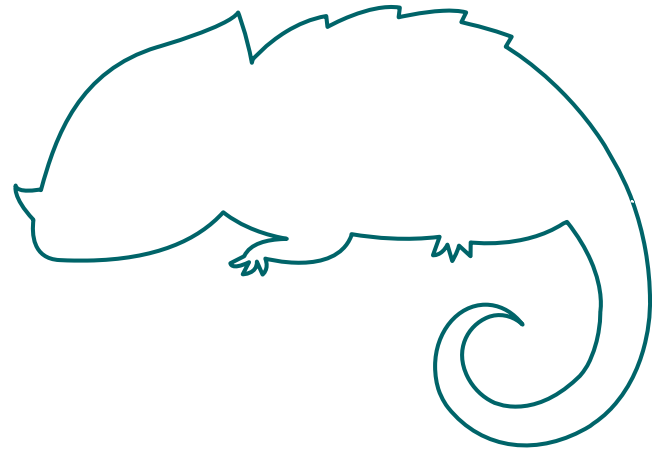
the material that makes colour in paint, chalk, crayon etc.

### synthetic

made by people (not from nature).

### spectrum

the colours of the rainbow (these colours appear when light is split and reflected).



# colour

contemporary art for kids

There's more to colour  
than meets the eye!

Page 3

**Tony Tuckson** 1921–73

*Pink lines (vertical) on red and purple* 1970–73

Synthetic polymer paint on composition board

Two panels: 213.5 x 244.5cm (overall)

Purchased 1998. Queensland Art Gallery

Foundation. Collection: Queensland Art Gallery

### Publisher

Queensland Art Gallery

Melbourne Street

South Bank, Brisbane

PO Box 3686

South Brisbane Q 4101

© Copyright 2003 Queensland Art Gallery

Sponsored by

**QUEST**  
community newspapers

colour – contemporary art for kids

Queensland Art Gallery

15 March – 9 June 2003

QUEENSLAND ART GALLERY

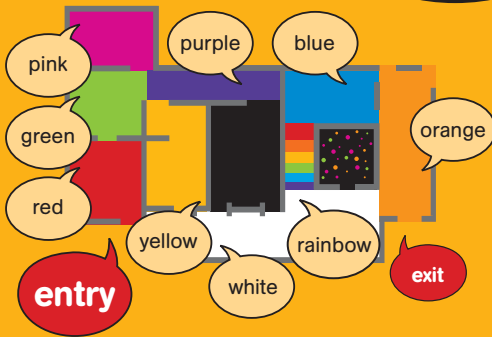


Supported by the Queensland Gallery of  
Modern Art Children's Art Centre.

Children's  
Activity  
Book



Help me find my way to the rainbow room!



Chameleon invites you to visit the colour house. Can you find clever Chameleon as it hides around the rooms?

(Clue: Chameleons are strange lizard-like creatures that change colour to match their surroundings!)



Did you know that colour is used by artists to express feelings and ideas, and that colour can have different meanings in different **cultures**? Artists often mix existing colours to make their own colours. This artist has used three colours.

Can you name them?



How do you think the artist was feeling when he made *Pink lines (vertical) on red and purple*?

Tony Tuckson *Pink lines (vertical) on red and purple (detail) 1970-73*

Which art works do you think Chameleon is hiding next to? Can you find them?

(Hint: Look at the labels next to each art work to discover what it is made from.)

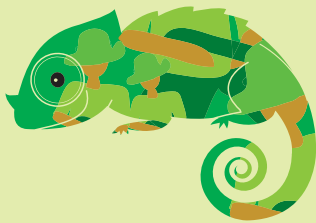
Painted with



woven with



shaped from



Which painting matches Chameleon's **camouflage** colour?

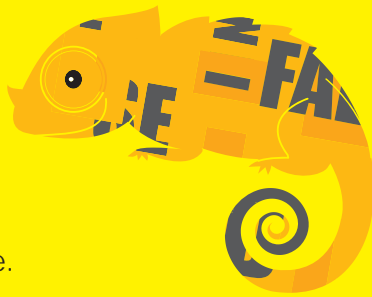
The colours on my skin are . . .



These are called **complementary colours**. They are opposite each other on the **colour wheel**. Can you find them on the colour wheel?

(Hint: Look on the last page.)

Signs are used to give messages. The colours give us a clue about the meaning of the sign.  
Yellow often warns people.



What do you think these road signs said before the artist cut them up to make her art work?

Can you finish writing these words?



Yellow often means 'look out!'

Answers: look, road, work, ahead, surface

When I'm in Yayoi Kusama's room I feel . . .



How does being in the room make you feel?

Choose and circle some of the feeling words below, and add some of your own.

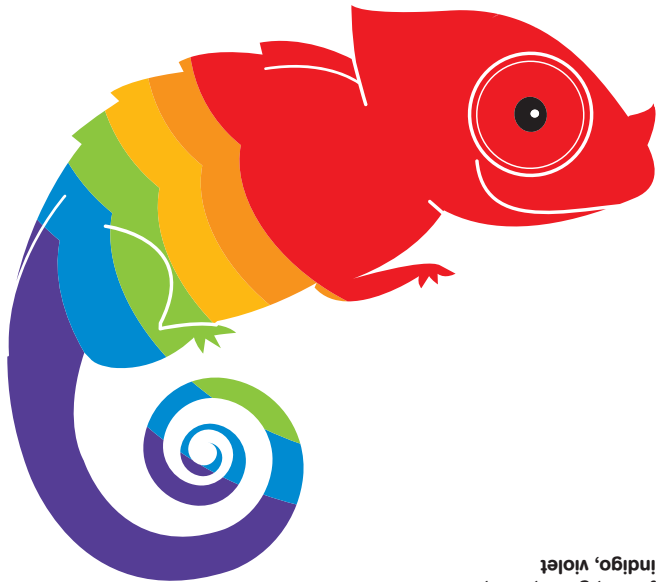


Ay-O is known as the 'rainbow painter' because he uses all the colours of the **spectrum**.

**What kind of paint does he use?**

(Hint: Look on the label next to the works.)

**What are the colours of the rainbow?**



Answers: red, orange,  
yellow, green, blue,  
indigo, violet

Chameleon inspired by Ay-O 'Rainbow landscape' series 1974

How long can  
you stare at this  
painting?



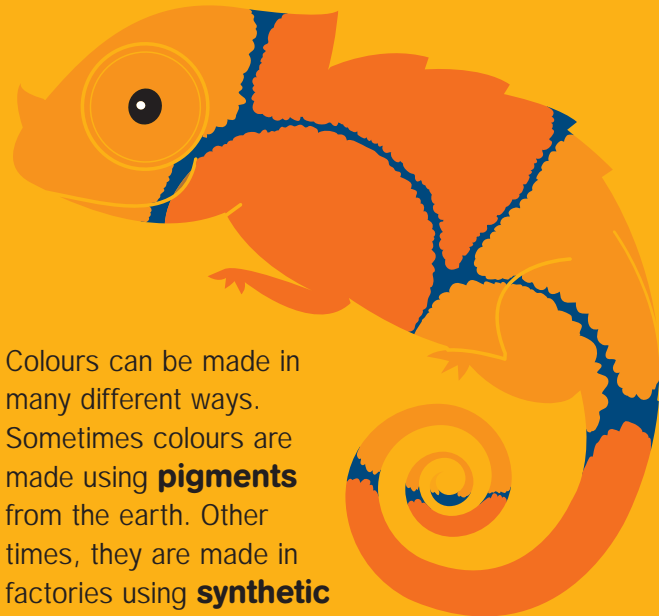
Bridget Riley is interested in how colours play with your eyes.

If you look at the stripes long enough, they will start to move.

Her painting is called *Big Blue*, but we can see many more colours. How many colours can you see and name?

<input type="text"/>	<input type="text"/>	<input type="text"/>
<input type="text"/>	<input type="text"/>	<input type="text"/>

Chameleon inspired by Bridget Riley *Big Blue* 1981-82



Colours can be made in many different ways. Sometimes colours are made using **pigments** from the earth. Other times, they are made in factories using **synthetic** (man-made) materials.

**Find one painting that uses synthetic polymer paints. Does it look flat or shiny?**

After you have finished looking at the **exhibition**, go to the top of the escalators to Gallery 2 and look for Indigenous paintings made with natural pigments. These are the colours of earth and soil.

I hope you've enjoyed your journey through the colour house.

**Which was your favourite art work and why?**



**When you get home, find a new coloured pattern and use the design to cover my body.**

(Tip: You can use paints, crayons, collage or pencils!)

**Colour wheel**

